

Media Release

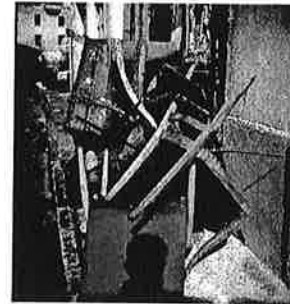
Gallery

April 15 – June 4

Fragments

Photographs, 1981 – 85

Roy Arden

**Opening reception for the artist:**

Saturday, April 15, 2 to 5 pm.

Artist's Talk by Roy Arden:

Sunday, April 30 at 2pm, at Presentation House Gallery.

While chiefly known today for his large colour photographs depicting what he has termed the "Landscape of the Economy", Vancouver artist Roy Arden's first body of photographic work was of a more personal and lyrical nature. This exhibition of colour photographs by Arden presents selected images from *Fragments*, images made between 1981 and 1985. Arden produced these portraits and details of urban texture in Vancouver, Paris, Geneva and Berlin.

As a young artist with a good knowledge of the history of art photography, Arden sought to develop a mode of vision that was personal yet not autobiographical. His stylistic influences were largely European - the Bauhaus, Surrealism and the photographs of Wols in particular. His portraits of friends, Vancouver poets and artists tend to focus on particular physical characteristics like a 'larger than normal' ear or the colour of sunlight on skin. The unpeopled pictures are of forlorn corners of the city and vitrines inhabited by hopeless commodities, rendered in deeply saturated colour and shallow focus. Arden has written that he wanted *Fragments* to be "full of flesh and things"; in these pictures, bodies and objects seem to tumble forward out of darkness and into appearance.

While smaller selections from *Fragments* were exhibited in Vancouver and Geneva between 1983-85, this is the first exhibition of this work in a decade and a half, and offers a more considered view of Arden's earliest work.

Roy Arden studied at the Emily Carr College of Art and Design and the University of British Columbia in Vancouver. His work has been exhibited widely since the early 1980s, in Canada and internationally. Important group exhibitions include: *Vancouver: Art and Artists 1931 - 1983*, *Art and Photography*, and *Broken Muse*, all at the Vancouver Art Gallery (1983, 84, and 86 respectively); *Perspective 89* at the Art Gallery of Ontario (2-person show); *150 ans de Photographie* at the Musée des beaux-arts, Nantes (1990); *In the Field/Landscape in Recent Photography*, at Margo Leavin Gallery in Los Angeles (1994); the *11th Biennale of Sydney*, Sydney, Australia (1998), and *Views from the Edge of the World*, at Marlborough Chelsea in New York. Recent solo shows, to name only a few, have been held at Centro de Fotografía, Universidad de Salamanca; Monte Clark Gallery in Vancouver; Patrick Painter, Inc. in Santa Monica; Art Gallery of York University in Toronto; the Morris and Helen Belkin Gallery, U.B.C. in Vancouver, and American Fine Arts Co. in New York.

This exhibition is supported by the Canada Council for the Arts.

Gallery Hours: Wed-Sun 12noon to 5pm. Thursday we are open late, 12noon to 9pm

For more information please contact Diane Evans at 986-1351

333 CHESTERFIELD AVENUE • NORTH VANCOUVER • BRITISH COLUMBIA • CANADA • V7M 3G9

TELEPHONE: 604-986-1351 • FAX: 604-986-5380

WEBSITE: www.presentationhousegall.com • EMAIL: phgallery@imag.net

Operated by the British Columbia Photography and Media Arts Society