

FIRST MEMBERS

**THIS IS YOUR PLACE
TO SEE THE WORLD THROUGH THE EYES
OF LOCAL AND INTERNATIONAL ARTISTS,
TO CELEBRATE PRIDE OF PLACE
AND THE DIVERSITY OF OUR COMMUNITY,
TO BE INSPIRED BY THE UNEXPECTED,
AND SO MUCH MORE.**



Rendering of The Polygon Gallery building, by Patkau Architects, 2016



THE POLYGON

The Polygon Gallery pushes the boundaries of adaptable programming to showcase and document the evolution of today's preeminent art forms, continuing Presentation House Gallery's singular focus on photography and media-based art for which it is internationally respected.

Expanded education programs for young people will inspire the next generation of creative and critical thinkers through hands-on activities, while The Polygon's adult audiences will benefit from talks and tours designed to provide new learning experiences.

A rigorous publishing program will thrive at The Polygon, reflecting a unique commitment to producing new artworks in book form, and providing artists with opportunities to expand their creative practice and reach a wider audience.

Tim Lee, *Untitled (The Pink Panther, 2092)*, 2007

A black and white photograph of a large, dense crowd of people at an art event. The crowd is composed of individuals of various ages and ethnicities, many of whom are looking towards the camera or slightly away. The background is a plain, light-colored wall, and the overall atmosphere is one of a busy, social gathering. The text is overlaid in the center of the image, in a bold, white, sans-serif font.

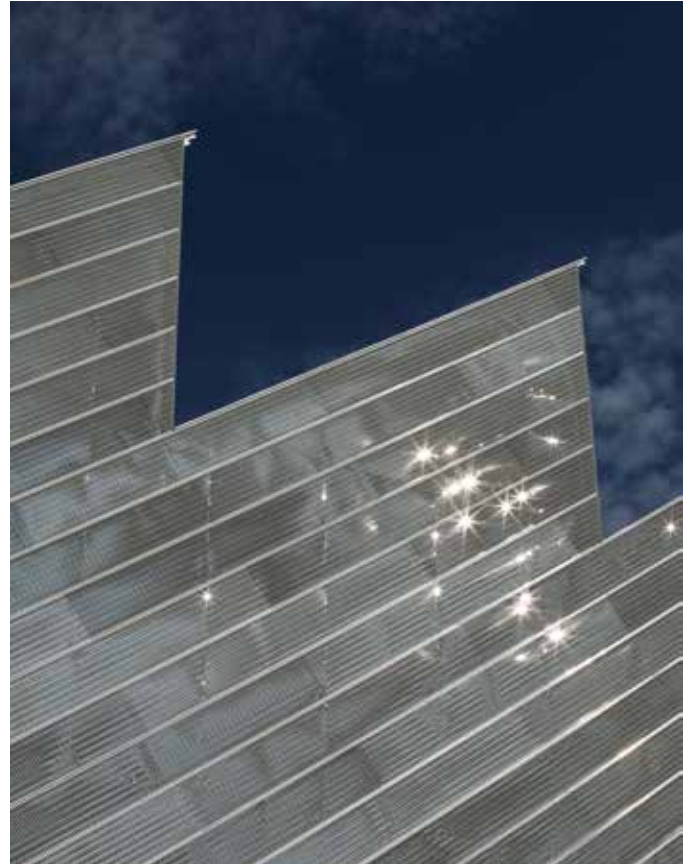
**AS A FIRST MEMBER, YOU WILL PROVIDE THE FOUNDATION
ON WHICH POWERFUL ART EXPERIENCES ARE BUILT.**

FIRST MEMBERSHIP

This is a one-time opportunity for you to be a part of the final phase of The Polygon Gallery's capital campaign, and contribute to the success of its inaugural year's artistic programming. First Members are closest to the vital work that The Polygon does in the community and beyond.

- › Enjoy a deeper engagement with The Polygon
- › Bring a guest on every visit
- › Skip the line to exhibitions featuring some of the world's most pivotal artists
- › Access exclusive events
- › Receive personalized communications throughout the year
- › Benefit from a full tax receipt for your \$250 First Member donation

Detail of The Polygon Gallery's exterior cladding, © Ema Peter Photography, 2017



T H E P O L Y G O N

**JOIN NOW TO BE AMONG THE EXCLUSIVE INVITEES
TO THE POLYGON GALLERY'S OPENING PARTY!**

For more information, please contact Andrea Jensen

604.986.1351

a.jensen@thepolygon.ca